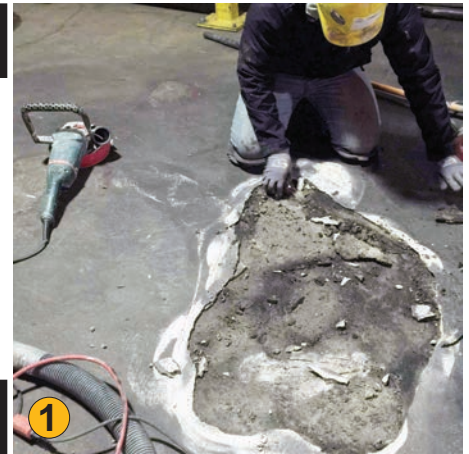


Perry's Ice Cream | Akron, NY

Owner	Perry's Ice Cream Akron, NY
Project Type	Concrete floor repair: level, patch, resurface
Square Feet	Approximately 325 sq. ft.
Use	Food manufacturing
Floor Type	Concrete
Materials	MG-Krete Low-temperature repair material
GC:	Direct



Project Details

- Repair of damaged, hazardous sections of existing concrete floor.
- Remove damaged surface, examine to coarse aggregate level. Test subsurface structural integrity.
- Remove spalled areas and create new surface.

Challenge: Extreme temperature conditions: 25° F

Heavy equipment, extreme temperatures and time took their toll on a working area of Perry's Ice Cream manufacturing plant. Areas of the concrete floor had deteriorated creating a potentially hazardous floor surface.

Damaged areas were removed to check structural integrity of floor. After inspection, damaged sections were removed, patched and replaced with new material and finished to existing surface levels. Leveling was checked to assure smooth, even walkway and equipment movement.

Results:

On completion, Perry's Ice Cream asked the MJA Company to inspect and repair additional areas.

NOTE: The MJA Company is Western New York's only NFSI Certified Walkway Auditor and is available to perform floor audits at your location.

Project Photos



Photos: (1) (Top Right) Removal of spalled floor sections; (2, 3) Closeup of damaged flooring; (4) Leveling floor after repair; (5) Patched area leveled and cured; (6) Overview of repaired areas, lighter colors show some of the repaired areas.

• For more about Perry's Ice Cream, visit www.perrysicecream.com

For more about this and other projects, contact The MJA Company.



Award Winning Concrete Floor Renovation, Repair & Treatment Specialists Since 1988

- Residential • Commercial • Industrial • Municipal
- Member: Concrete Polishing Association of America
- Certified Walkway Auditor: National Floor Safety Institute (NFSI)

Buffalo: 716-831-7091
 Rochester: 585-713-5808
www.theMJAcO.com