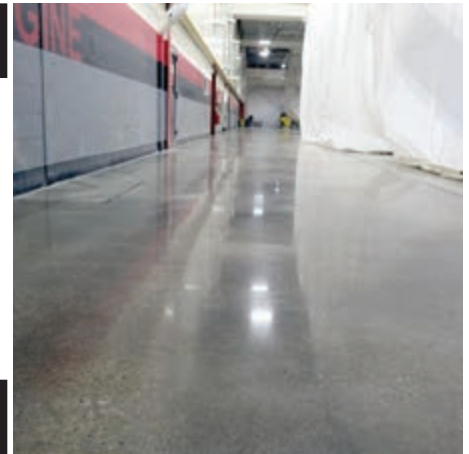


Cummins Engine Plant

Owner	Cummins Engine Lakewood, NY
Project Type	Concrete Polishing
Square Ft	41,000
Use	Heavy Manufacturing
Floor Type	Existing high-strength concrete floor
GC	N/A
Materials	Cutting: SASE Polishing System: FGS/PermaShine



Project Details

- Diamond polished concrete, 80-grit metals through 800-grit resin.
- Newly placed concrete, 12-16 inch thick slabs.
- Extremely hard, high strength concrete required use of softest bond diamonds

Challenge: Plant in operation and required work area staging and timing.

Each phase included demo of old slabs and installation of new slabs.

Cummins production schedules and space constraints required expedited demo, placement and polishing.

Polishing began after a minimal 7 days of curing due to the tight time frames.

Polishing required within 5 days of each completed section. The MJA Company met scheduling through continuous 2-shift production.

Results:

Concrete successfully polished while allowing Cummins Engine Plant to continue operations.

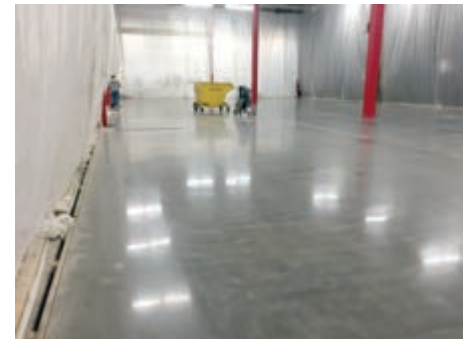
Project Photos



The MJA Company staging equipment for concrete polishing.



Floor preparation and polishing in progress. 2-shift production schedule.



Section of 41,000 sq. ft. polished concrete floor

For more about this and other projects, contact The MJA Company.



Award Winning Concrete Floor Renovation, Repair & Treatment Specialists Since 1988

- Residential • Commercial • Industrial • Municipal
- Member: Concrete Polishing Association of America
- Certified Walkway Auditor: National Floor Safety Institute (NFSI)

Buffalo: 716-831-7091
Rochester: 585-713-5808
www.theMJAco.com